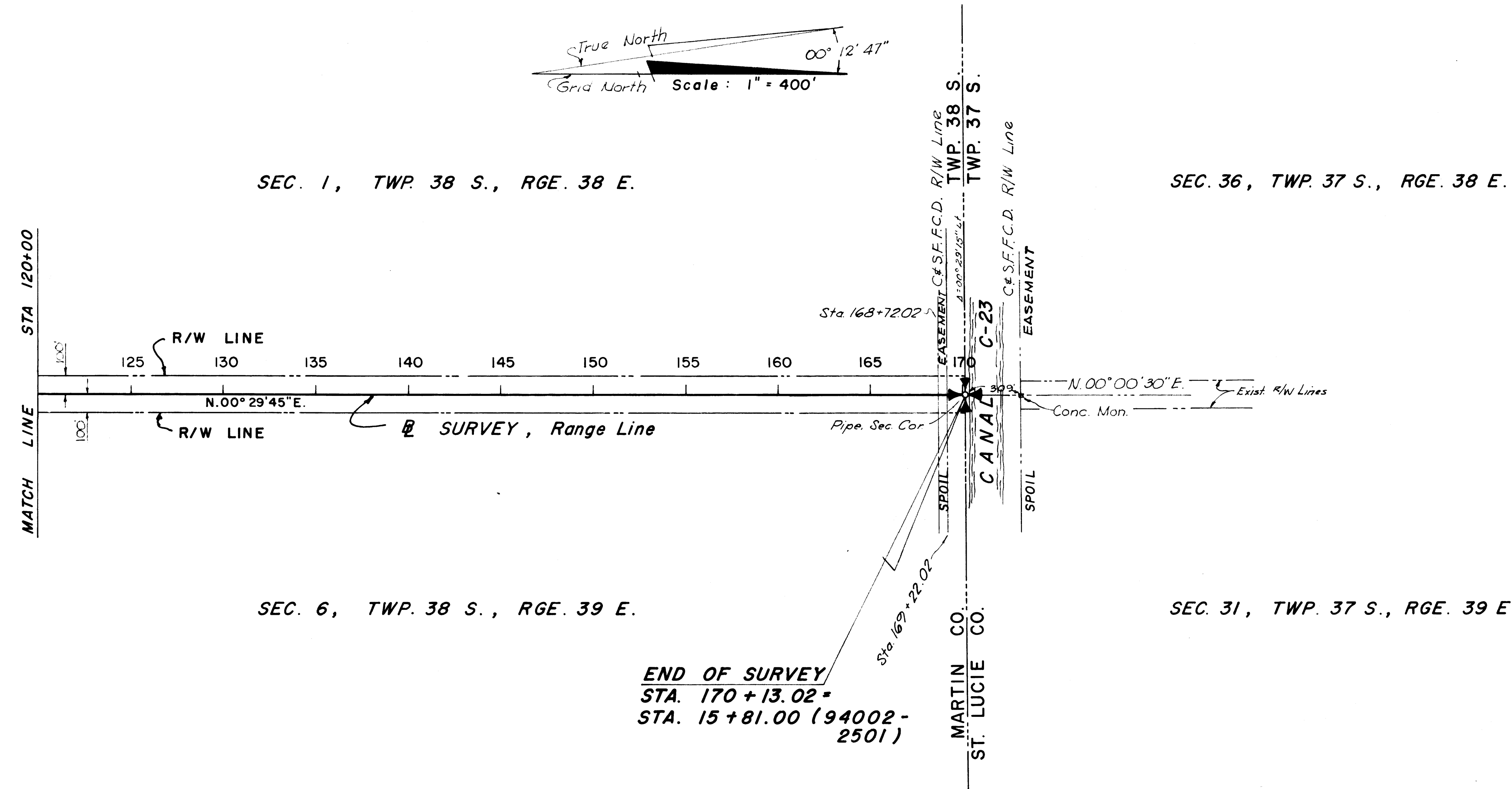
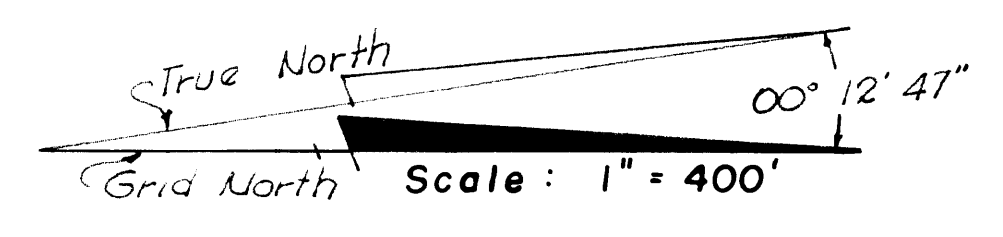
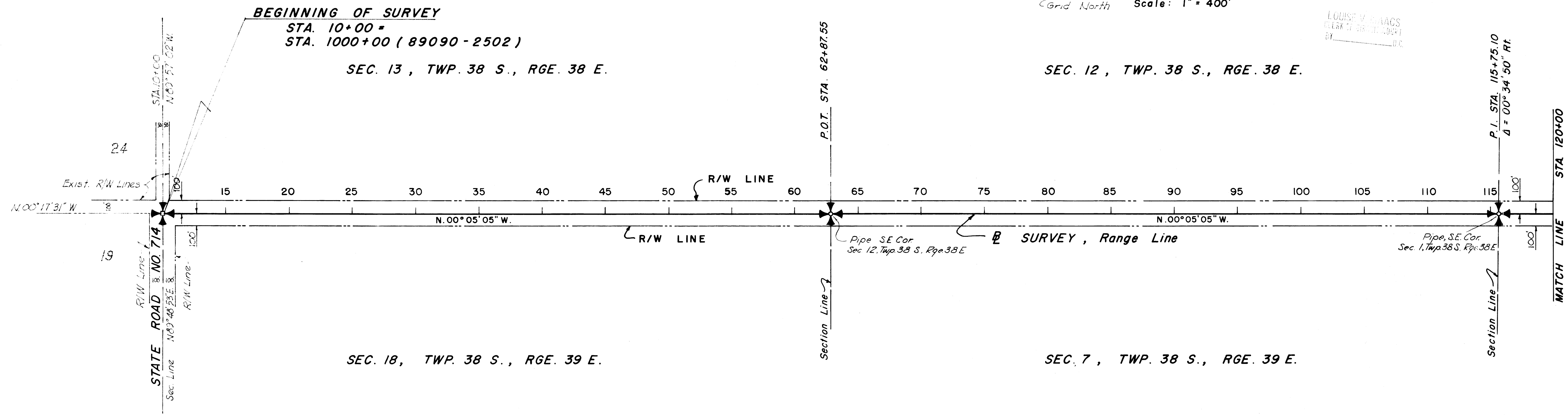
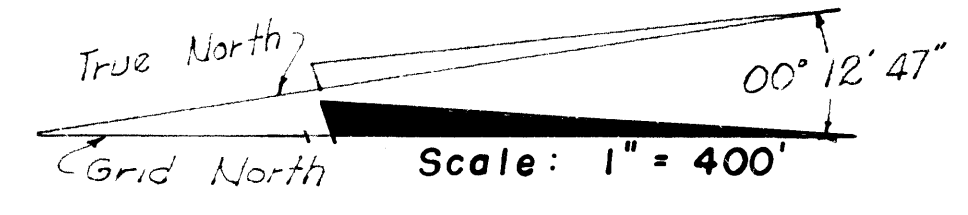


| FED. ROAD DIV. No. | STATE | PROJECT No. | FISCAL YEAR | SHEET No. |
|--------------------|-------|-------------|-------------|-----------|
| 3                  | FLA.  |             |             |           |

JOB NO. 89001-2501

02 FEB 25 AM: 06

LOUISE V. ISAACS  
CLERK OF CIRCUIT COURT  
BY \_\_\_\_\_



This right-of-way map when recorded is an instrument of title conveyance, transferring in accordance with Florida Statutes 337.29 (1977) all right, title, and interest of the Florida Department of Transportation in the road, street, highway, set forth on this map to MARTIN County.

Recorded in Public Records of MARTIN County, Florida, this 27th day of FEBRUARY A.D. 1982 in Plat Book 9 Page 17

Louise V. Isaacs  
Clerk of Circuit Court  
MARTIN County, Florida  
By Charlotte Buskey, O.C.  
File # 435161

**"KEY MAP"**

BROCKWAY, WEBER & BROCKWAY  
ENGINEERS, INCORPORATED  
WEST PALM BEACH, FLORIDA  
STATE OF FLORIDA  
STATE ROAD DEPARTMENT

**RIGHT OF WAY MAP**

|                      |          |                            |      |
|----------------------|----------|----------------------------|------|
| STATE ROAD No. S-609 |          | MARTIN COUNTY              |      |
| BY                   | DATE     | APPROVED BY                | DATE |
| DRAWN RBY            | 7/27/64  | <i>Charles C. Davidson</i> |      |
| TRACED RBY           | 7/27/64  |                            |      |
| CHECKED KJH          | 10/21/64 |                            |      |
| COMPARED             |          |                            |      |
| INDEXED              |          |                            |      |

| REVISION | BY | DATE |
|----------|----|------|
|          |    |      |
|          |    |      |

SECTION. 89001-2501 SHEET 1